



Moving Forward

BATTERY TECHNICAL DATASHEET

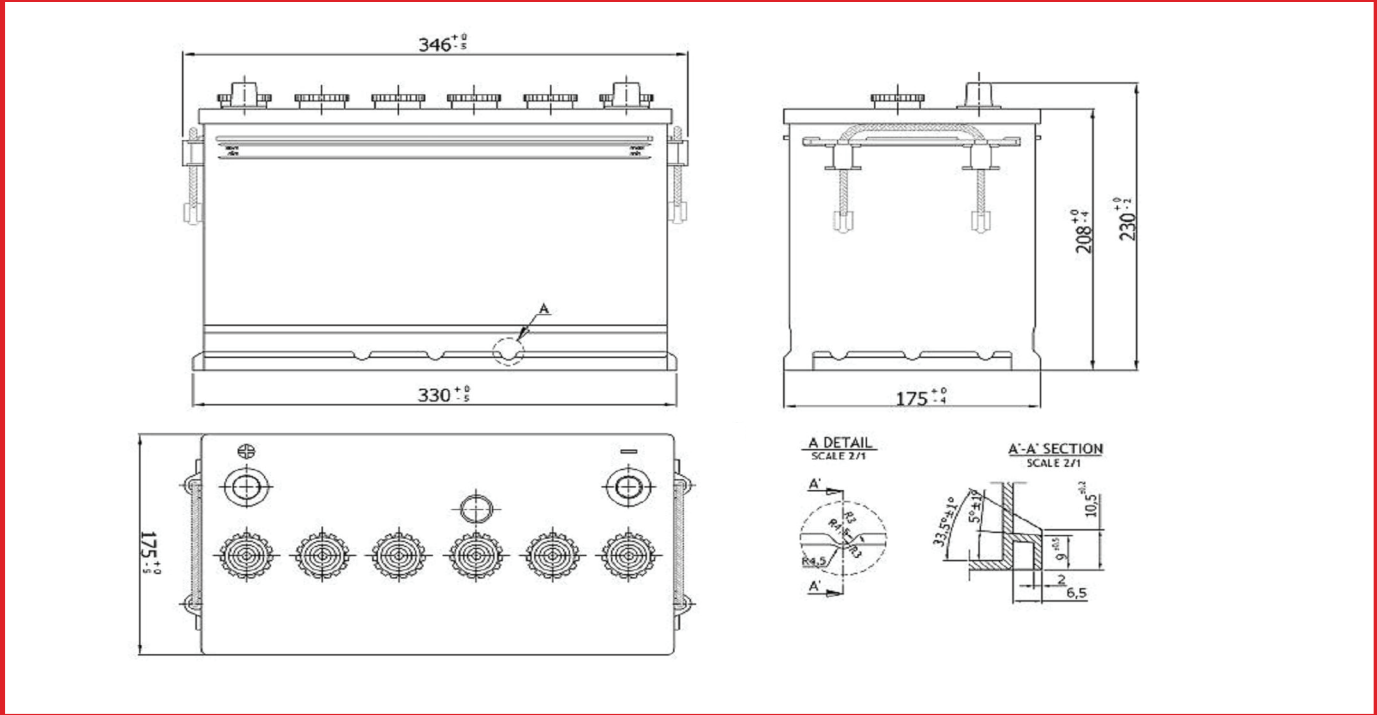
N100

PRODUCT SPECIFICATIONS

Design Code: **6052024**

Approval Date : **12.08.2016**

TECHNICAL DRAWING OF N100



PRODUCT AND PHYSICAL SPECIFICATIONS

BCI GROUP CODE	MODEL NO.	VOLTAGE	CELLS	TERMINAL TYPE	DIMENSIONS			WEIGHT
					L	W	H	
--	N100	12	6	1	346	175	230	25.30kg ± 3%

ELECTRICAL SPECIFICATIONS

CRANKING PERFORMANCE			RESERVE CAPACITY (Minutes)	CAPACITY AMP HOURS(Ah)
CA @ 0°C	CCA @ FC	HCA @ 30°C	@ 25 AMPS	20-Hr
780	710	850	180	100

PRODUCT AND PHYSICAL SPECIFICATIONS

BOX TYPE	BOX COLOUR	HOLD DOWN TYPE	LID TYPE	LID COLOUR	TERMINAL LAYOUT	INDICATOR
H4	BLACK	B3	SMF	BLACK	0	INCLUDED

PHYSICAL BATTERY SPECIFICATIONS DIAGRAMS

HOLD DOWN TYPE	TERMINAL LAYOUT	TERMINAL TYPE
<p>B3</p> <p>BASE HOLD DOWN 10.5 MM (ON LONG AND SHORT SIDES)</p>	<p>0</p>	<p>1 TAPERED TERMINAL IN COMPLIANCE WITH DIN 72311 T.4</p>